

Navigating CMS (A basic guide)

Install the client for basic use only. Also make sure you are an administrator on the machine itself i.e. permissions on the PC itself. When you install the client you will have to make an Admin account.

****Note**, this does not have to be the same as the account you created at the DVR/NVR.



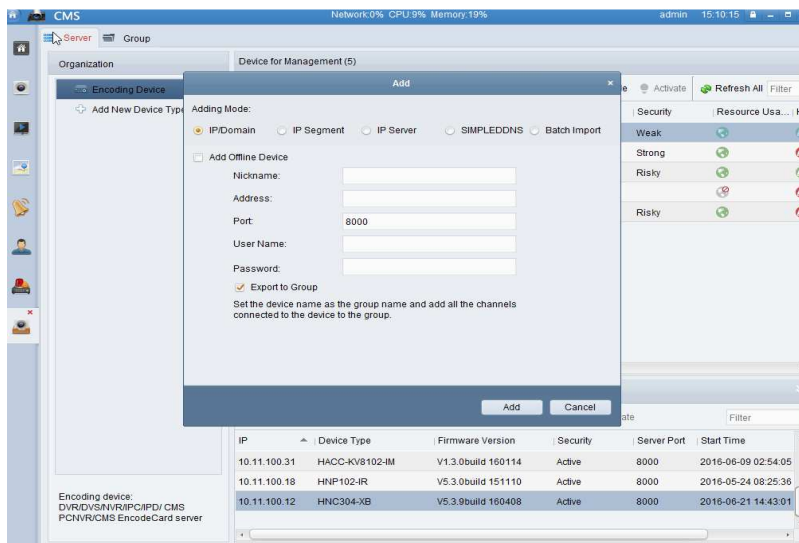
Once set up the DVR/NVR and all components on the first PC you can export the configuration file so as to copy to any other PCs, and save time. This procedure will be explained as the last point of this document so as to maintain a chronology to the procedure.

Device Manager

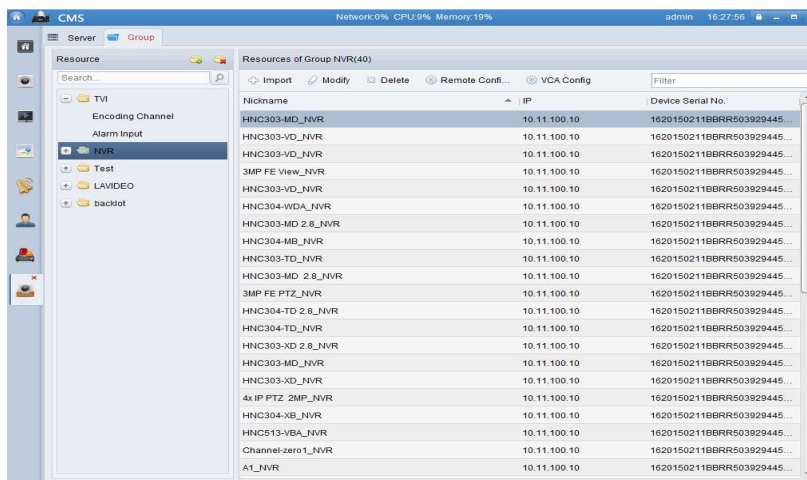


We start with Device Manager because you need to have a DVR/NVR or camera configured under this to be able to do the main view or remote playback.

- 1) Adding a device, input the relevant info and also export to group. In order to find out the IP address you are looking for you will need to run SADP.

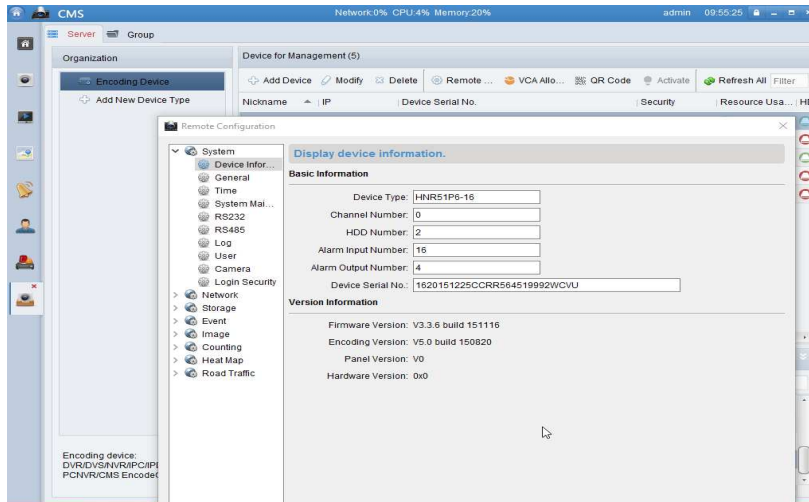


- 2) Once you have added the device and click the group tab you should be able to see the DVR/NVR and all attached devices. To import the camera names, please see [Importing Camera names into CMS.pdf](#)



****Note if you later add a camera. You will have to add it as a device and then to the relevant group by using import under the group tab.**

- 3) You can do any type of configuration to the main unit by clicking on the server tab for the DVR or NVR by clicking on the server tab, then selecting the relevant encoding device in the right hand window. And clicking the remote configuration button.



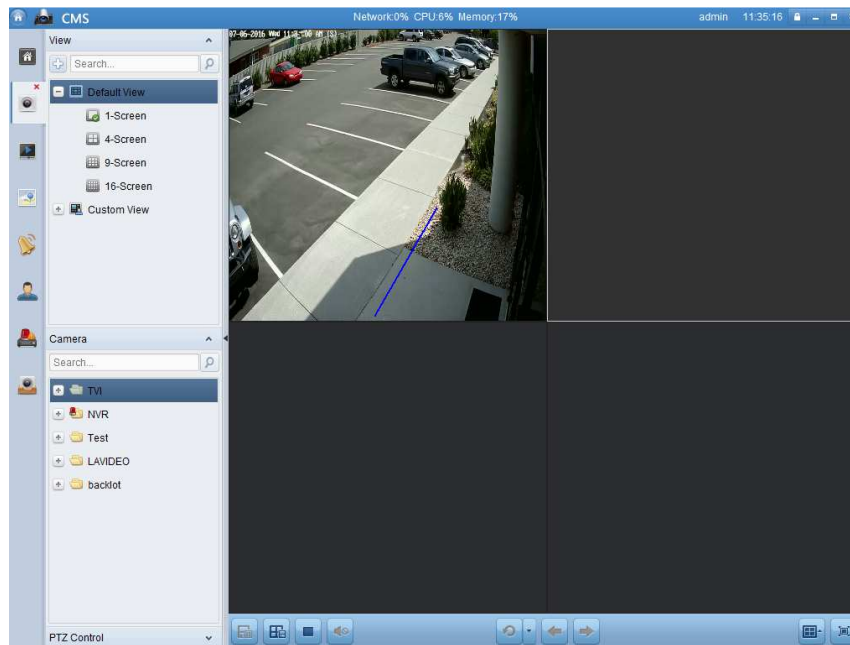
- 4) You can do any type of configuration to the individual cameras by clicking on the 'Group' tab, and then selecting the relevant camera in the right hand window. And clicking the remote configuration button.

Nickname	IP	Device Serial No.
HAC304-FD4 3.6mm_TV1	10.11.100.11	HAR505-161620141110AAWR...
HAC303-FD4 2.8mm_TV1	10.11.100.11	HAR505-161620141110AAWR...
Front Door (A)_TV1	10.11.100.11	HAR505-161620141110AAWR...
Tech Lab_TV1	10.11.100.11	HAR505-161620141110AAWR...
Front Door West (A)_TV1	10.11.100.11	HAR505-161620141110AAWR...
Back Lot_TV1	10.11.100.11	HAR505-161620141110AAWR...
HAC304-FB4 6mm_TV1	10.11.100.11	HAR505-161620141110AAWR...
HAC303-FB4 3.6mm_TV1	10.11.100.11	HAR505-161620141110AAWR...
HAC304-FD4 2.8mm_TV1	10.11.100.11	HAR505-161620141110AAWR...
HAC304-MD 2.8_TV1	10.11.100.11	HAR505-161620141110AAWR...
CDS WH Entry_TV1	10.11.100.11	HAR505-161620141110AAWR...
L Warehouse_TV1	10.11.100.11	HAR505-161620141110AAWR...
HAC303-FB4 6mm_TV1	10.11.100.11	HAR505-161620141110AAWR...
No Camera_TV1	10.11.100.11	HAR505-161620141110AAWR...
No Camera_TV1	10.11.100.11	HAR505-161620141110AAWR...
IT Room_TV1	10.11.100.11	HAR505-161620141110AAWR...
Channel-zero1_TV1	10.11.100.11	HAR505-161620141110AAWR...
A1_TV1	10.11.100.11	HAR505-161620141110AAWR...
A2_TV1	10.11.100.11	HAR505-161620141110AAWR...
A3_TV1	10.11.100.11	HAR505-161620141110AAWR...
A4_TV1	10.11.100.11	HAR505-161620141110AAWR...

Main View



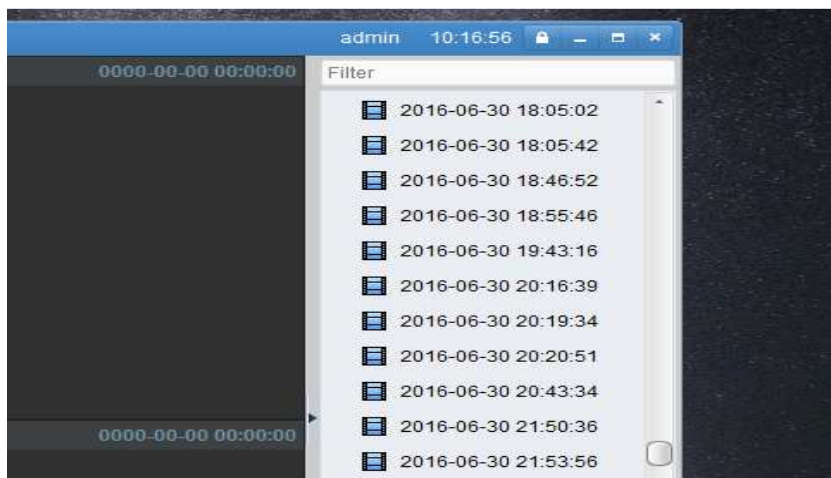
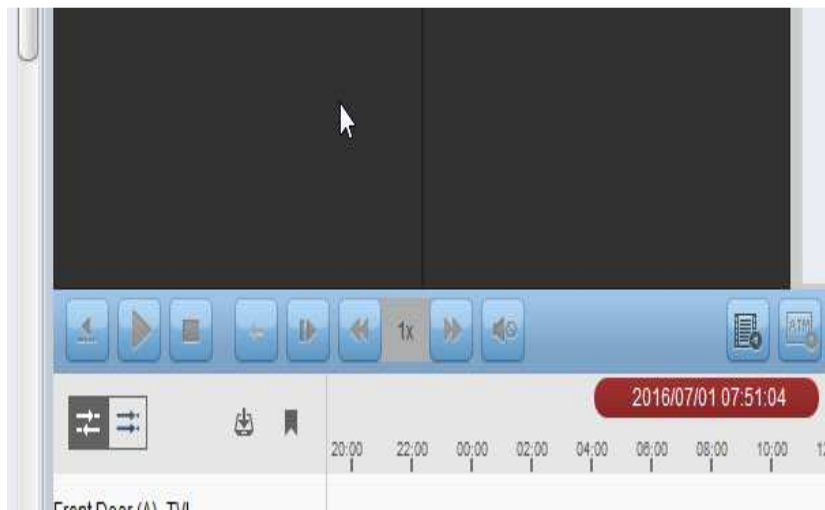
In main view you can drag and drop any camera in real-time into the window pane and also go from 1-4-9-16 window (and beyond) style views by clicking window division button.



Remote Playback



With remote playback you can proceed to any time by clicking on the red bubble, enter the date and time and it will bring up a pane to the right with a set of time stamps.



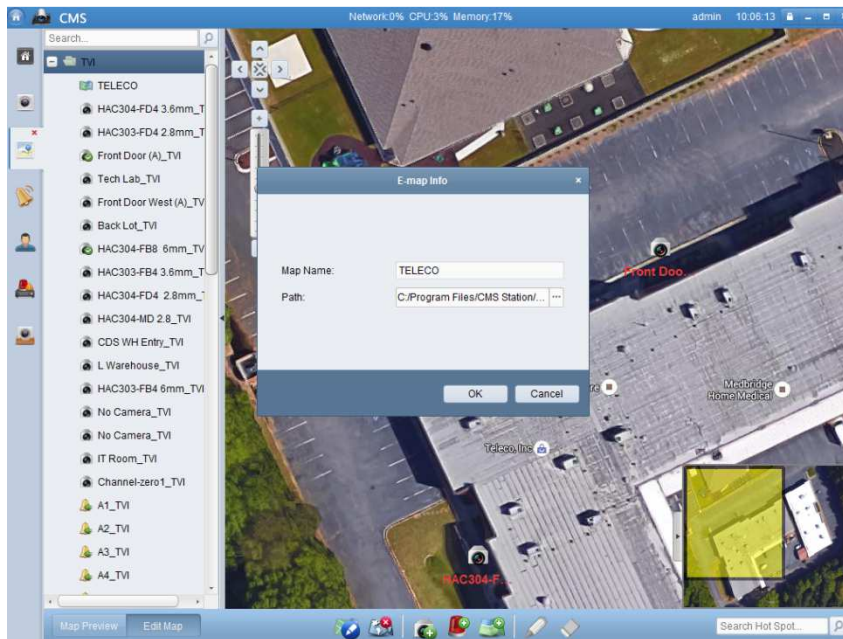
Right click on image, click on download then select the file you need and click on download again to the relevant folder on your PC.

Emap



This is a way to import a map (arial view or plan) in EMAP in edit map view. Here you can download and import a map or floor plan of the relevant building or area you are securing with cameras.

You can import a map very easily by creating an image file and adding to folder on a PC and then importing. (You must be in edit map mode to do this)



You can also add where the specific cameras or alarms are located by adding a hotspot.



or

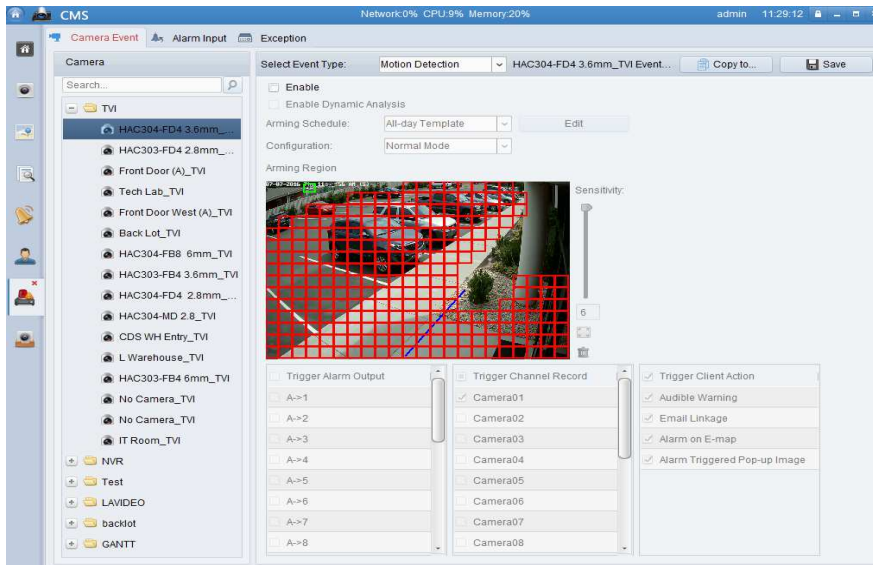


are the relevant icons to click to accomplish this.

Event Manager



Generally in event manager you can set the same type of motion detection as in Device manager, here's is where you can set line crossing and motion detection. However this is normally setup under device manager or at the DVR/NVR level initially. So it's more of a shortcut to quickly change or tweak settings.



Storage Schedule



Like event manager this is a shortcut that can help you tweak storage settings that would normally be set at the DVR/NVR level.

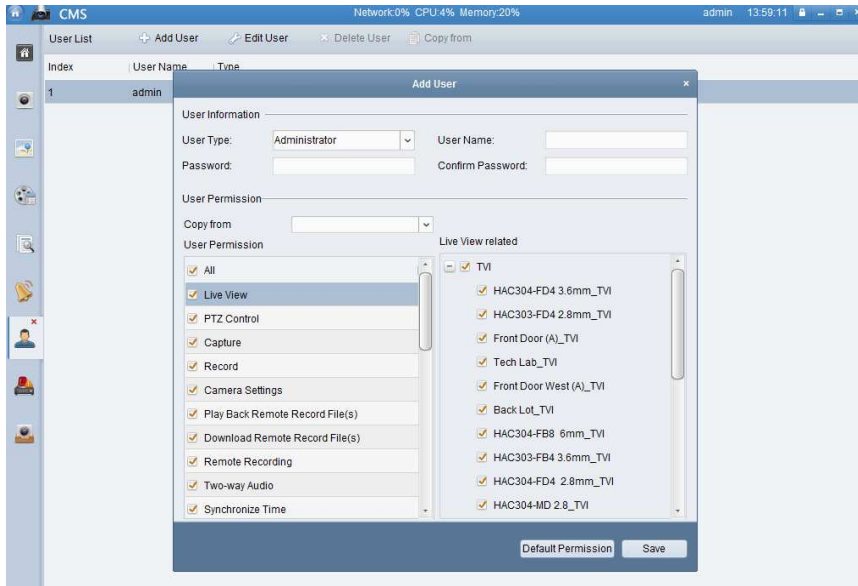
Account Manager



Account Manager is where you can add users and permissions. One of the most important and fundamental points of this is that there are two levels that must be adhered to so as to assign rights to various users correctly.

- 1) You must be running CMS with admin rights at the PC level (for e.g. windows) otherwise the rights for each user will not hold.
- 2) You have to login as an admin in CMS before assigning users and permissions.

Once logged in as an administrator you can add users very easily and assign permissions simply by checking or un-checking permissions. This is a useful tool to stop any type of tampering with settings. Simply hit save once all information has been set.



Log Search



Log search is a simple tool that can allow you to see each log type be it motion detection or line crossing with a time and date stamp.

System Config



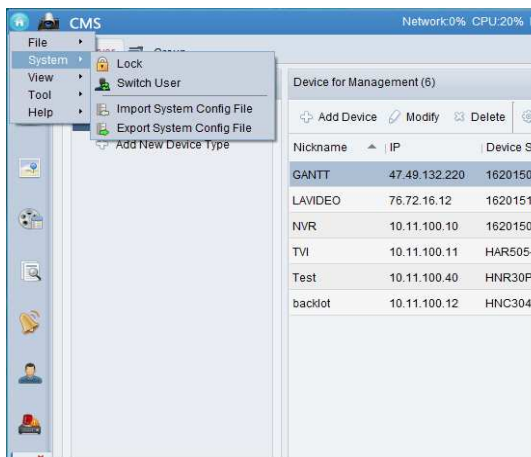
This houses some other settings such as where to save downloaded files. Generally this is not tampered with and left at the defaults.

Alarm icon



See all alarm and event info in real-time. There are also options to filter which alarm info you see.

Exporting configuration file/Multiple PC setup



Once you have set everything the way need it to be in CMS there is a very simple way to export or import the configuration file. This saves time and frustration of setting up the CMS client settings on multiple machines. As the graphic above shows, you would hypothetically export from your first machine (where everything is set correctly), and then on your target machines just import the file you exported from the original and first machine. Simple!

For more information please see **Importing&Exporting CMS configuration.pdf**